

Name: _____

Date: _____

Project: Wildlife Trading Cards

Purpose: To learn how to create Plant and Wildlife Trading Cards.

Keeping track of your Habitat takes a bit of organization! To make this task easier, Habitat Tracker© includes a feature that enables you to create Trading Cards of the Plants and Wildlife that you have entered into your database. There are 100 and 1 uses for these Trading Cards. In addition to helping you remember which Plants and Wildlife you have already identified, you can use them to challenge your friends and impress you parents! Follow the instructions in this project to learn how to create your own Plant and Wildlife Trading Cards.

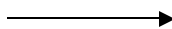
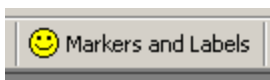


Materials Needed:

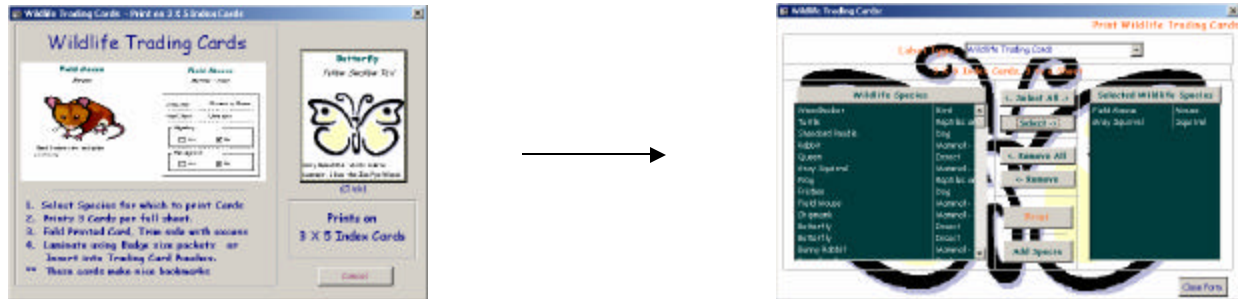
1. Heavy stock paper that can be used in a printer.
We use 67 lb stock paper. You can also use 3 x 5 Index card template stock, or plain paper.
2. Plant and Wildlife data entered into Habitat Tracker©
3. Printer
4. Scissors or Paper Cutter
5. Trading Card Sleeves
(Optional. Can be acquired at a local comic book store)
6. Laminating material and Laminator (optional - provides longer durability)
**The Trading Card Sleeves serve the same purpose and are more economical.

Project:

1. **Launch Habitat Tracker©.**
2. Before creating these Trading Cards, you must **enter the data** you have collected on the **Plant Identification** and **Wildlife Identification Worksheets** into Habitat Tracker©.
3. If available, **associate a digital Photo or Clip Art image** to each Plant or Wildlife record.
4. When finished entering your Plant and Wildlife data, **Click** the button on the Toolbar that says **"Markers and Labels"**



5. Click either the **Plant Cards** or the **Wildlife Cards** button



6. Using the Plant or Wildlife Selection Screen, **Select a species** from the list on the left for which you would like to make Trading Cards:
- Click to **Select a Specie** in the **Left** list
 - Click** the **Select** → button between the two lists.
This action will copy the Specie selected to the Right List
 - When you have 3 Species listed on the Right, **Click** the **Print** button.
****Note** that you can add the same specie more than once to the list on the right in order to print multiple cards of the same specie.
7. If the Trading Cards look ok in **Print Preview**, **Print** your **Trading Cards** by clicking the **Printer** button. (Or, you can go to the **File Menu**, and select the **Print** command.)
8. After Printing is complete, **Separate the Cards**:
These cards print 3 to a page.
They are each 3 inches high by 5 inches wide (just like an index card).
- Cut** the **Cards apart** to create separate 3 x 5 inch cards
 - Fold** each card **in half**, and then **cut along the folded edge**
9. **Finish** Creating the Cards
- Place** each cut cards **into a Trading Card sleeve**
or
 - Laminate** the front and back of the cards together. (Follow manufacturer's directions)
10. **Use** your cards.
- Trade** with friends,
 - Study** from the cards
 - Stay organized** with your card collection.