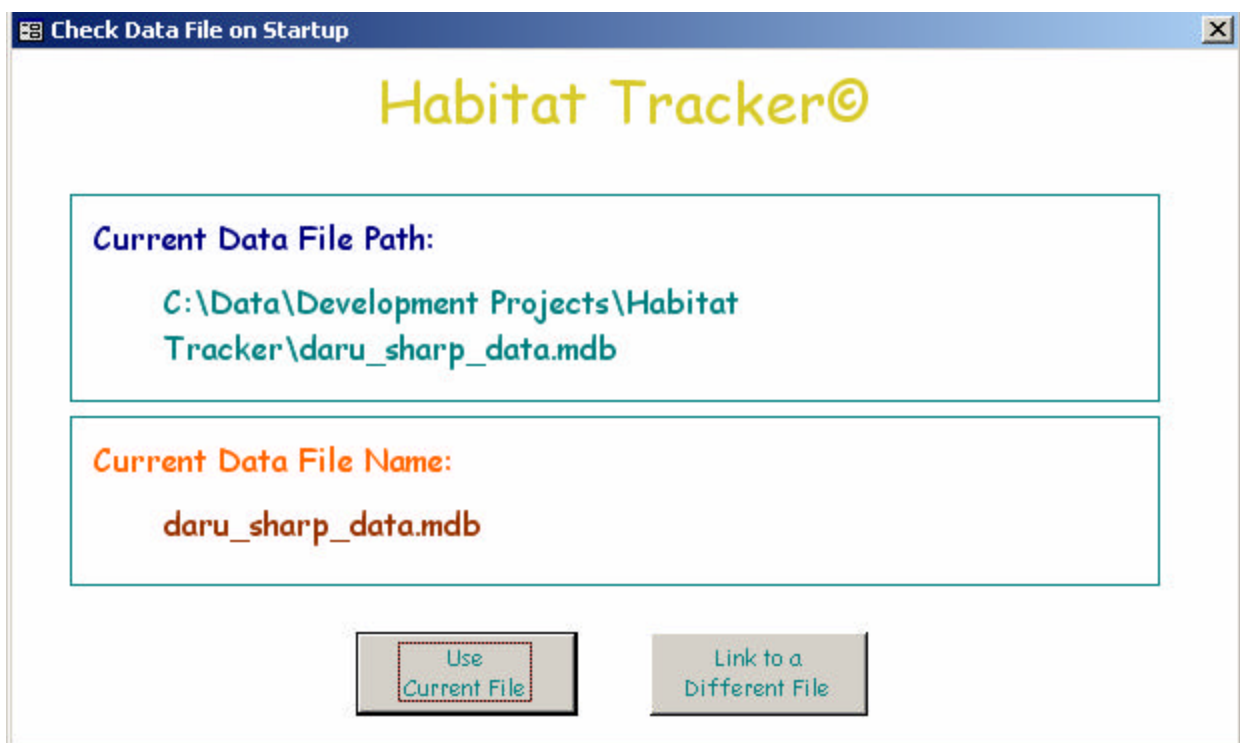


Application Startup

Purpose: To Understand the process of connecting, or linking, to a Data File on Application Startup.

Each time Habitat Tracker© is launched, the application needs to connect to the file that stores the Habitat Tracker© data. Because multiple students can use the same Habitat Tracker© Application file, Habitat Tracker© notifies the student of the name of the Data file to which the application was last connected. The student has the choice of reconnecting (relinking) to that file, or selecting a different file.

The First time Habitat Tracker© is launched, there will be no 'previous' Data file. In this situation, the Application will prompt the user to enter a name for the Data file, and then Habitat Tracker© will create that file, and link to it. This process happens also if Habitat Tracker© can not find the last file (i.e. If the file was moved or deleted).

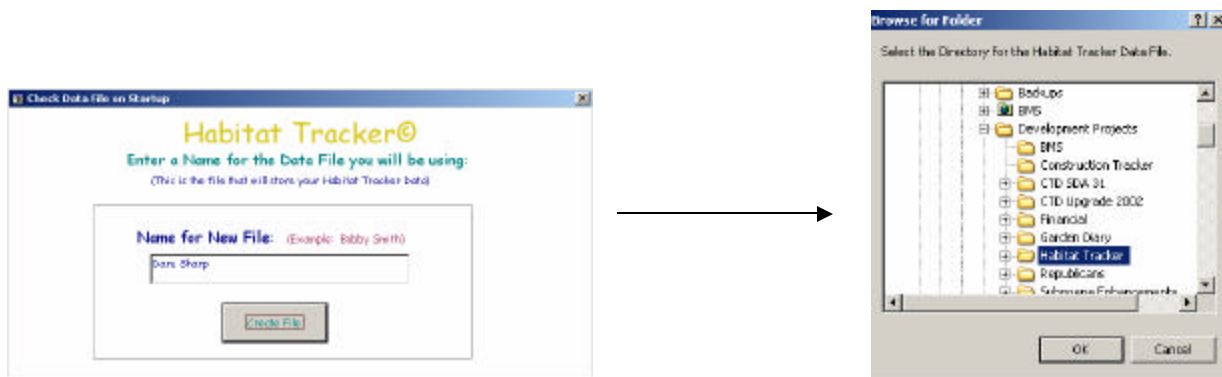


Application Startup

First Time Use:

(Or, if the Application can not find the Data file last used)

1. **Start** Menu, **Habitat Tracker**, Click to launch the application.
2. **Set up** the New Data File:
 - a. **Enter the Name** for the Data file in the form that appears.
 - b. **Click** *Create File*.
 - c. **Browse** to the Directory in which to store this new file.
 - d. **Select** the Directory.
 - e. **Click** *Ok*.



3. **Use** the **Habitat Tracker©** Application!
All data entered during this session will be stored in the file you just created.

Subsequent Use:

1. **Start** Menu, **Habitat Tracker**, **Click** to launch the application.
2. **Review** the File Name and Path displayed on the Screen that appears.
 - a. To **Use the same Data file**, **Click** *Use Current File*.
 - b. To **Use a different file**, that was previously created, **Click** *Link to a Different File*.
 - c. To **Create a New Data file**
 - i. **Click** *Use Current File*.
 - ii. **Once Main Form appears**, **Click** *Data File Setup* on the Link Habitat Data Toolbar.
(Follow the Instructions for Setting up, and Linking to, Data Files)