

Terminology of Screen Types

Purpose: To learn the terminology associated with different screen types in a desktop database application.

There are several different screen types in Habitat Tracker© and each performs a different function in the application. Once you become familiar with each type of screen, you will find that they are all easy to use. Below, we explain the different functionality of each type of screen in Habitat Tracker©.

1. The Main Screen



The **Main Screen** is like home base in Habitat Tracker©. This is the opening screen of the application, and the screen from which you will navigate to all other areas of the application.

Simply click one of the buttons towards the bottom of the Main Screen to tell Habitat Tracker© the type of information with which you want to work. Habitat Tracker© will take you to that section of the application.

2. Switchboard Screens



Terminology of Screen Types

The **Switchboard Screens** in Habitat Tracker© help you move about the application. Simply click on a button towards the bottom of the screen to indicate to Habitat Tracker© where you want to go next. The **Close** button will take you back to the Main Screen.

3. Search Screens



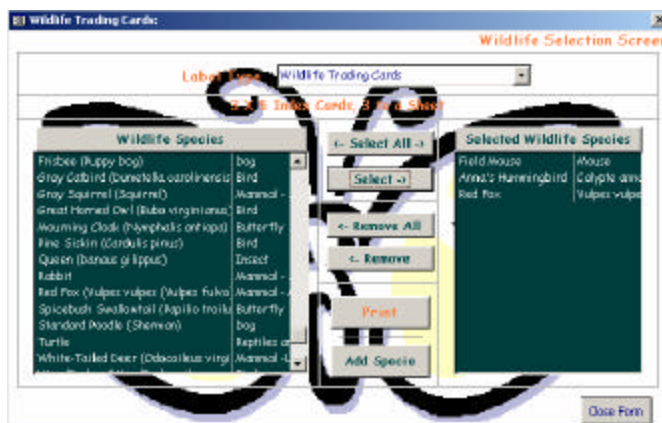
Search Screens help you quickly find information that you have previously entered into Habitat Tracker©. They are a type of navigational screen, with the added functionality of allowing you to find specific data. Specific instructions for using these screens is included in the student workbook.

4. Data Entry Screens

Data Entry Screens allow you to enter all of the specific data that Habitat Tracker© tracks. There is a Data Entry screen for Habitat, Plant, Wildlife, Journal, To-do, Note, Reminder, Seed Starting, Seed Collecting, Reference, Purchase, and Wish List Data. These screens are all easy to use. Simply place your cursor in the white box corresponding to the data you want to enter, and type or select the value to be entered. Many of the Data Entry screens allow you easy navigation to associated data as well.

Terminology of Screen Types

5. Selection Screens



There are several **Selection Screens** in Habitat Tracker©. Each allows you to select the specific choices to be associated to another Habitat entity, or to be published on one of the many Habitat Tracker© reports. We use Selection Screens to identify the plant varieties, wildlife species, or habitats for markers or labels we want to create also. In each case, the list on the left of the screen displays all the records the user has set up in Habitat Tracker© and the list on the right displays a subset of records chosen for the report or date entry task.

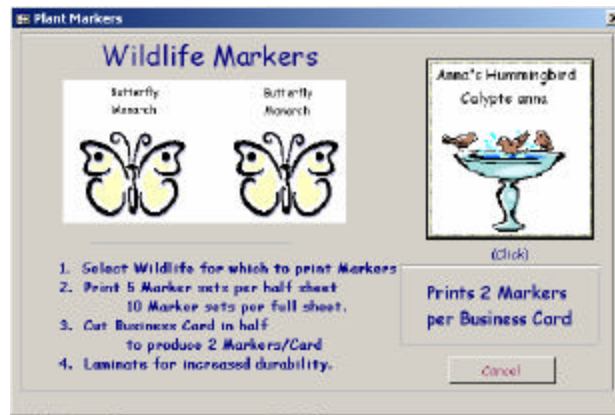
6. Report Date Range Screens



The **Report Date Range Screens** function in allowing the user to specify an exact date range from which to publish data for a report. These Screens are very easy to use because most of the date ranges are pre-specified. If a custom date range is required, data entry of the corresponding dates is simplified through the use of the Calendar Form. In addition, the selected date range is printed at the top of each report, so that the user knows what data was requested when viewing the result!

Terminology of Screen Types

7. Create a Label or Marker Screen



The Screens involved in helping you create Markers and Labels are both informational and navigational! If you read the information on the screen, you will find instructions guiding you in the creation of the marker or label. When you click the button on the screen, you will be directed to a Selection Screen. There, you can specify the Varieties to use in the creation of your markers or labels. It really couldn't be easier than this!

8. Navigation Screen



Some screens in Habitat Tracker© don't do anything except help you get somewhere else. These screens give you options, usually in the form of different buttons, and when you select an option (or click a button), Habitat Tracker© knows what to do next.

Note: Habitat Tracker© is best viewed at a screen resolution of 800 600 or 1024 X 768 Pixels. If Habitat Tracker©'s screens do not fit on your monitor, you need to adjust your screen resolution.